

ALL THREAD ROD



- * **SIZE AVAILABILITY:** 1/4" thru 1-1/4".
- * **FINISH:** Plain, Cadmium or Galvanized.
 - All Thread Rod has a U.S. Standard thread (NC) running the full length of the rod.
 - Class 2 A fit. USS National coarse thread.
 - Made from low carbon steel.
 - Use of All Thread Rod eliminates the necessity of cutting threads on the job; simply cut the rod to desired length.
 - Can be cut to order in 1 foot increments when less than 6 foot lengths are desired.
 - Maximum temperature rating 750*.
- * **ORDERING:** Specify rod size, figure number, name, length required and finish.

FIG. 156

ROD SIZE	STANDARD PACK * FEET / TUBE			PIECES PER TUBE	WEIGHT PER 100 FT	MAX. LOAD 650°F	MAX. PIPE SIZE
	6 FT	10 FT	12 FT				
1/4"	300	500	600	50	12	200	1-1/2"
3/8"	150	250	300	25	29	600	2"
1/2"	72	120	144	12	54	1000	2-1/2", 3"
5/8"	48	80	96	8	83	1700	4", 5"
3/4"	30	50	60	5	125	2700	6"
7/8"	24	40	48	4	165	3500	12"
1"	12	20	24	2	230	4500	18"
1-1/8"	6	10	12	1	280	6000	20"
1-1/4"	6	10	12	1	355	7500	24"

CHAN-ALL NUTS

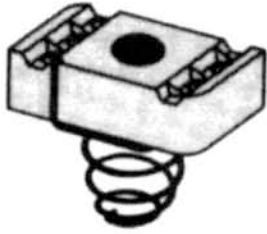


FIG. 1000N

- * **SIZE AVAILABILITY:** 3/8" thru 7/8".
- * **FINISH:** Black, Galvanized.
 - All Chan-All nuts are N.C. tapping.
 - It is made from low carbon steel.
 - This nut can be used with all Modern Chan-All series.
 - The 1000N available with or without short or regular springs.
- * **ORDERING:** Specify rod size, figure number, name and finish.

ROD SIZE	A	B	THICKNESS	WT PER HD	STD PACK
1/4"	1-3/8"	3/4"	1/4"	6	100
3/8"	1-3/8"	3/4"	3/8"	9	100
1/2"	1-3/8"	3/4"	1/2"	12	100
5/8"	1-3/8"	3/4"	1/2"	13	50
3/4"	1-3/8"	3/4"	1/2"	13	50
7/8"	1-3/8"	3/4"	1/2"	13	50

CHAN-ALL NUTS

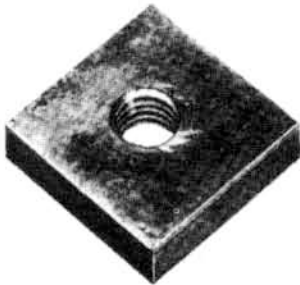


FIG. 2000N

- * **SIZE AVAILABILITY:** 3/8" thru 7/8".
- * **FINISH:** Black, Galvanized.
 - All Chan-All nuts are N.C. tapping.
 - It is made from low carbon steel.
 - This nut can be used with all Modern Chan-All series.
 - The 2000N is not available with springs.
- * **ORDERING:** Specify rod size, figure number, name and finish.

ROD SIZE	A	B	THICKNESS	WT PER HD	STD PACK
1/4"	1-1/4"	1-1/4"	3/8"	13	100
3/8"	1-1/4"	1-1/4"	3/8"	13	100
1/2"	1-1/4"	1-1/4"	3/8"	13	100
5/8"	1-1/4"	1-1/4"	3/8"	13	50
3/4"	1-1/4"	1-1/4"	3/8"	13	50

"INSERT" CHAN-ALL NUTS

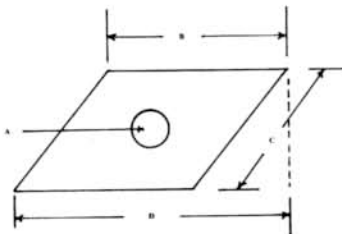


FIG. 2050

- * **SIZE AVAILABILITY:** 3/8" thru 7/8".
- * **FINISH:** Black, Galvanized.
 - All Chan-All nuts are N.C. tapping.
 - It is made from low carbon steel.
 - This nut can be used with all Modern Chan-All series.
 - The 2050 is not available with springs.
- * **ORDERING:** Specify rod size, figure number, name and finish.

ROD SIZE	A	B	THICKNESS	WT. PER HD.	STD PACK
3/8"	1-1/4"	3/4"	3/8"	10	100
1/2"	1-1/4"	3/4"	3/8"	10	100
5/8"	1-1/4"	3/4"	3/8"	10	50

ROD COUPLING

- * **SIZE AVAILABILITY:** 1/4" thru 1".
- * **FINISH:** Black, Galvanized or Stainless Steel.
 - All rod couplings are made from low carbon steel.
 - Stainless steel couplings are Type 304.
 - All couplings are tapped right hand NC thread only.
 - Longer coupling lengths can be furnished by special order.
 - These couplings are used for connecting rods in long hanging applications.
 - Load ratings are per ASME code for pressure piping.
- * **ORDERING:** Specify size, number, figure number, name and finish.

FIG. 825

NUMBER	BOLT THREAD	LENGTH	MAX LOAD	WT PER HD	STD PACK
0	1/4"	7/8"	200	3	100
1	3/8"	1-1/8"	500	5	100
2	1/2"	1-1/4"	1000	7	100
3	5/8"	2-1/8"	1500	11	50
4	3/4"	2-1/4"	2200	23	50
5	7/8"	2-1/2"	2500	80	25
6	1"	3"	2800	95	25
7	1/4" one end x 3/8" other end	1-3/4"	200	4	100
8	3/8" one end x 1/2" other end	1-3/4"	500	8	100
9	1/2" one end x 5/8" other end	2-1/8"	1000	12	100
10	5/8" one end x 3/4" other end	2-1/4"	1500	19	50

HANGER RODS

* **SIZE AVAILABILITY:** 3/8", 1/2", 5/8".

* **FINISH:** Black, Galvanized.

- Hanger rod lengths carried in stock are 6" thru 18" in 2" increments.
- The rods come with 2 1/2" of right hand thread on each end.
- Hanger Rods are made from low carbon, commercial quality steel.
- Special lengths greater than 18" long, as well as larger diameters greater than 5/8", can be furnished to order.
- Thread lengths longer than 2 1/2", maximum 6", are available upon request.
- Maximum operating temperature is 750 degrees F.



FIG 810

* **ORDERING:** Specify rod diameter and length, figure number, name and finish.

SIZE DIAMETER	SIZE LENGTH	THREAD LENGTH	MAXIMUM LOAD		STANDARD PACKING
			650*F	750*F	
3/8"	6"-18"	2-1/2"	500	400	50
1/2"	6"-18"	2-1/2"	900	800	50
5/8"	6"-18"	2-1/2"	1500	1400	25

COACH SCREW RODS

* **SIZE AVAILABILITY:** 3/8", 1/2", 5/8".

* **FINISH:** Black, Galvanized.

- Hanger rod lengths that are carried in stock are 6" thru 12" in 2" increments.
- The rods come with 2 1/2" of right hand thread on one end and gimlet pointed lag thread on the other end.
- Hanger Rods are made from low carbon, commercial quality steel.

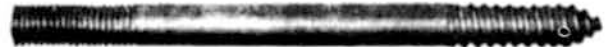


FIG 820

* **ORDERING:** Specify rod diameter and length, figure number, name and finish.

SIZE DIAMETER	SIZE LENGTH	MACHINE THREAD LENGTH	COACH SCREW LENGTH	MAXIMUM LOAD	STANDARD PACKING
1/2"	6"-12"	2-1/2"	2-1/2"	WOOD	50
5/8"	6"-12"	2-1/2"	2-1/2"	WOOD	25

U.S.S. STEEL HEX NUTS

FIG.781
FIG.781 S.S.
FIG.781 HVY.

- * **SIZE AVAILABILITY:** 3/8" thru 1-1/4".
- * **FINISH:** Black, Galvanized.
 - Finished hex nuts are made from low carbon steel.
 - Stainless steel nuts are Type 304.
 - All hex nuts are tapped per USS thread pitch standards (NC thread).
 - A heavy hex pattern is also available.
- * **ORDERING:** Specify size, figure number, name and finish.

BOLT SIZE	THREADS/INCH	WT PER/HD.	STD PACK
1/4"	20	0.5	100
3/8"	16	1.5	100
1/2"	13	2.5	100
5/8"	11	4	50
3/4"	10	6	50
7/8"	9	8	50
1"	8	12	25
1-1/8"	7	16	25
1-1/4"	7	21	25

ROUND HEAD STOVE BOLTS

FIG. 800

- * **SIZE AVAILABILITY:** 1/4" thru 3/8" x length".
- * **FINISH:** Black, Galvanized or Copper Plated.
 - Round head slotted stove bolts are made from low carbon steel.
 - The thread pitch is NC threading.
 - All bolts are furnished with square machine screw nuts.
 - Finished hex nuts can be furnished upon request.
- * **ORDERING:** Specify rod size, figure number, name and finish.

SIZE	LENGTH	WT PER HD	STD PACK
1/4"	X 1/2"	0.5	100
1/4"	X 3/4"	1	100
1/4"	X 1"	1.5	100
1/4"	X 1-1/4"	2	100
1/4"	X 1-1/2"	2.25	100
5/16"	X 3/4"	2	100
5/16"	X 1"	2.5	100
5/16"	X 1-1/4"	3	100
5/16"	X 1-1/2"	3.5	100
3/8"	X 1"	4	100
3/8"	X 1-1/4"	4.5	100

PAK-TITE ANCHORS

- * **SIZE AVAILABILITY:** #10 thru 5/8".
- * **FINISH:** Plain
 - Anchors are tapped for machine screws, hex bolts or all thread rod (NC tapping).
 - Tapered expanding nut is provided, installed in each anchor.
 - Setting tool is provided when needed, thus eliminating the need to install with screws or bolts.
 - This anchor is generally used in floor or wall applications.
 - The Pak-Tite is made of lead.
- * **ORDERING:** Specify size and figure number.

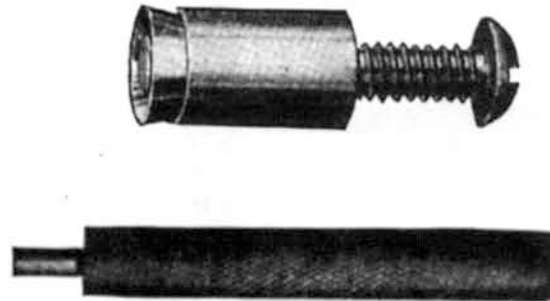


FIG. 735

SCREW SIZE	***** DIAMETER	***** DRILLING DEPTH *****	WEIGHT PER HD	STANDARD PACKING
10 - 24	3/8"	5/8"	2	100
1/4" - 20	1/2"	3/4"	4	100
5/16" - 18	9/16"	1"	6	100
3/8" - 16	3/4"	1-1/4"	13	100
1/2" - 13	7/8"	1-1/2"	20	100
5/8" - 11	1-1/8"	2"	40	50

SHIELDS WITH EXPANSION PLUGS

- * **SIZE AVAILABILITY:** 1/4" thru 3/4".
- * **FINISH:** Galvanized.
 - Anchors are tapped for machine bolts and all thread rod (NC tapping).
 - Tapered expanding nut is provided, installed in each anchor.
 - This anchor is used in floor, wall or ceiling applications.
 - Snap off type is designed for power tool installation
 - Flush type is hammer installed.
 - All figure 737 shield anchors are made of steel.
 - Factory Mutual approved .



Snap-Off Type



FIG. 737

Flush Type

- * **ORDERING:** Specify size, figure number and snap-off or flush type.

BOLT SIZE	OUTSIDE DIAMETER	DEPTH OF THREAD		HOLE DEPTH		SHELL LENGTH	WEIGHT PER HD	STANDARD PACKING
		SNAP- OFF	FLUSH	SNAP-OFF	FLUSH			
1/4"	7/16"	3/8"	13/32"	1-3/32"	1"	2	100	
3/8"	9/16"	9/16"	15/32"	1-17/32"	1-1/2"	6	50	
1/2"	11/16"	13/16"	23/32"	2-1/32"	2"	11	50	
5/8"	27/32"	15/16"	7/8"	2-15/32"	2-1/2"	30	25	
3/4"	1"	17/32"	1-1/8"	3-1/4"	3-1/8"	46	25	

TOGGLE BOLTS

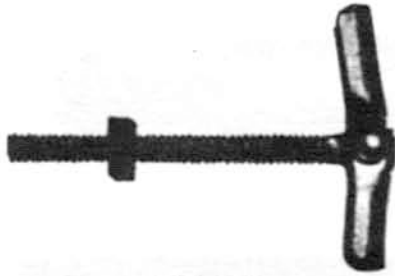


FIG. 710

* **SIZE AVAILABILITY:** 3" thru 6".

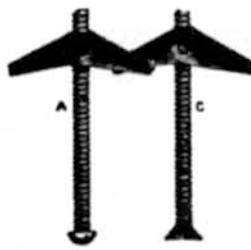
* **FINISH:** Galvanized only.

- There is a riveted head for swing design.
- It is furnished with a finished hex nut; if washers are needed then order them separately.
- The pull out strength is per industry standards.
- Longer lengths are not available.
- This toggle is also referred to as "tumble" or "swing" type.

* **ORDERING:** Specify rod size, figure number, name and finish.

SIZE	DRILL SIZE	WT PER HD*710	WT PER HD*725	STD. PACK
3/16" x 3"	1/2"	4	4	100
3/16" x 4"	1/2"	4.5	4.5	100
3/16" x 5"	1/2"	5	5	100
3/16" x 6"	1/2"	6	6	100
1/4" x 3"	5/8"	7	7	100
1/4" x 4"	5/8"	8	8	100
1/4" x 5"	5/8"	9	9	100
1/4" x 6"	5/8"	11	11	100
3/8" x 3"	7/8"	15	15	50
3/8" x 4"	7/8"	18	18	50
3/8" x 5"	7/8"	21	21	50
3/8" x 6"	7/8"	25	25	50
1/2" x 3"	7/8"	30	30	50
1/2" x 4"	7/8"	34	34	50
1/2" x 5"	7/8"	38	38	50
1/2" x 6"	7/8"	42	42	50

SPRING WING TOGGLE BOLTS



**No. 4 No. 5
FIG. 725**

* **SIZE AVAILABILITY:** 3" thru 6".

* **FINISH:** Galvanized only.

- This toggle is a "spring head" design.
- The spring head design allows for easier installation.
- It is furnished with a finished hex nut; if washers are needed then order them separately.
- The pull out strength is per industry standards.
- Longer lengths are not available.

* **ORDERING:** Specify rod size, figure number, name and finish.

ROUND STEEL WASHERS



FIG. 621

- * **SIZE AVAILABILITY:** 1/4" thru 1".
- * **FINISH:** Black, Galvanized.
 - Washers are made per U.S.S. standards.
 - These washers should be used where single or double nut hanging requirements are specified.
 - See Modern Figure 620 for square washers.
 - Larger sizes are available special order.
- * **ORDERING:** Specify rod size, figure number, name and finish.

BOLT SIZE	O.D.	WT PER HD.	STD PACK
1/4"	U.S.S.	0.25	100
3/8"	U.S.S.	0.75	100
1/2"	U.S.S.	1-1/2	100
5/8"	U.S.S.	2-1/2	50
3/4"	U.S.S.	4	50
7/8"	U.S.S.	6	50
1"	U.S.S.	8	50

LOCK WASHERS



FIG. 622

- * **SIZE AVAILABILITY:** 1/4" thru 7/8".
- * **FINISH:** Black, Galvanized.
 - Washers are made per U.S.S. standards.
 - These washers should be used when vibration situations exist.
 - Larger sizes are available special order.
- * **ORDERING:** Specify rod size, figure number, name and finish.

BOLT SIZE	WT PER HD.	STD PACK
1/4"	0.25	100
5/16"	0.5	100
3/8"	0.75	100
1/2"	1-1/2	100
5/8"	2-1/2	100
3/4"	4	50
7/8"	6	50

FENDER WASHERS

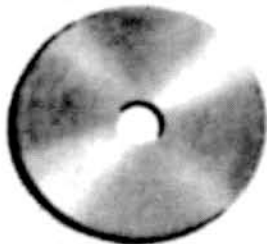


FIG. 623

- * **SIZE AVAILABILITY:** 1/4" thru 5/8".
- * **FINISH:** Black, Galvanized.
 - Washers are made per U.S.S. standards.
 - These washers should be used when larger hole sizes exist.
 - Larger sizes are available special order.
- * **ORDERING:** Specify rod size, figure number, name and finish.

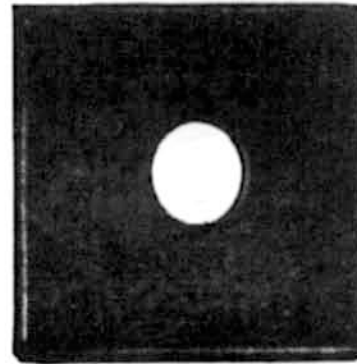
BOLT SIZE	O.D.	WT PER HD	STD PACK
1/4"	1-1/4"	1.5	100
5/16"	1-1/4"	2	100
3/8"	1-1/2"	2	100
1/2"	1-3/4"	3	100
5/8"	1-3/4"	5	50

STEEL WASHERS

* **SIZE AVAILABILITY:** 2" thru 4" square.

* **FINISH:** Black, Galvanized, Prime Painted and Red Oxide.

- The Plate Washer is used for larger openings where regular round washers are too small.
- Numerous applications include bar joists, back to back channels, purloins, z-bars and wood joists.
- This washer gives added strength due to its larger size. Thicker washers and larger squares are available as a special order for stronger requirements.
- Can also be used with Figure 606, 607 and 608 truss brackets.
- It works well with trapeze and drop rod applications with Modern Fig. 1000B, 1000E and 1000F Chan-All lines.
- The end measurement under "size" in the chart below indicates the thickness of the washer (bolt size hole needs to be specified separately).



* **ORDERING:** Specify size, bolt hole, figure number and finish.

FIG. 620

	BOLT	WEIGHT	STANDARD
SIZE	SIZE	PER HD	PACKING
2" X 2" X 1/8"	3/8", 1/2", 5/8"	14	100
2" X 2" X 1/4"	3/8" thru 3/4"	20	100
2-1/4" X 2-1/4" X 1/4"	3/8" thru 3/4"	25	50
2-1/2" X 2-1/2" X 1/4"	3/8" thru 3/4"	40	50
3" X 3" X 1/4"	3/8" thru 1"	50	BULK
3" X 3" X 3/8"	5/8" thru 1"	60	BULK
4" X 4" X 1/4"	3/8" thru 1-1/8"	110	BULK
4" X 4" X 3/8"	5/8" thru 1-1/8"	140	BULK

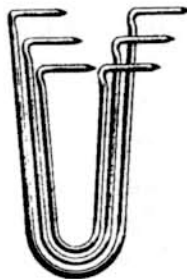
BOLT THREADED LAG SCREW



- * **SIZE AVAILABILITY:** 3/8" thru 5/8".
- * **FINISH:** Black or Galvanized.
 - This bolt features lag threading on one end and bolt threading on the other end.
 - The lag thread end is gimlet pointed for better starting and easier installation.
 - Pilot hole drilling is recommended for 1/2" and 5/8" lag screws.
 - A hex nut can be installed on the bolt thread end for power tool use.
 - Standard lengths are indicated below, but longer lengths are available by ordering Figure 820.
- * **ORDERING:** Specify size, figure number, bolt number and finish.

FIG. 550

BT LAG NUMBER	BOLT THREAD	BOLT LENGTH	WEIGHT PER HD	STANDARD PACKING	MAXIMUM LOAD
1	3/8"	3-1/2"	8	100	WOOD
2	1/2"	4"	17	100	WOOD
3	5/8"	5-1/2"	40	BULK	WOOD



WIRE PIPE HOOKS

- * **SIZE AVAILABILITY:** 1/2" thru 2".
- * **FINISH:** Black, Galvanized or Copper Plated
 - These hooks are designed for light weight iron pipe or copper tube.
 - Sharp pointed leg ends facilitate hammering for wood installations.
 - These hooks come in different lengths to make pipe or tube installation possible when hanging one under the other.
- * **ORDERING:** Specify size, length, figure number, name and finish.

FIG. 560

I.P. / C.T. SIZE	LENGTHS	WEIGHT PER HUNDRED	STANDARD PACK
1/2"	4"	6	100
1/2"	6"	8	100
3/4"	4"	6	100
3/4"	6"	8	100
1"	4"	6	100
1"	6"	8	100
1"	8"	10	100
1-1/4"	6"	8	100
1-1/4"	8"	11	100
1-1/2"	6"	8	50
1-1/2"	8"	11	50
2"	8"	11	50
2"	10"	13	50

LAG BOLTS



- * **SIZE AVAILABILITY:** 3/8" thru 5/8" diameter.
- * **FINISH:** Black, Galvanized.
 - Lag bolts are made from low carbon, grade 2 material.
 - All lag bolts are hex head form for easy installation.
 - All sizes furnished with gimlet points for quick starting in wood applications.
 - Other sizes not listed are available by special order.
- * **ORDERING:** Specify rod size, figure number, name and finish.

FIG. 270

DIAMETER	STANDARD LENGTHS CARRIED IN STOCK							
	1-1/2"	2"	2-1/2"	3"	3-1/2"	4"	5"	6"
1/4"	1-1/2"	2"	2-1/2"	3"	3-1/2"	4"	5"	6"
5/16"	1-1/2"	2"	2-1/2"	3"	3-1/2"	4"	5"	6"
3/8"	1-1/2"	2"	2-1/2"	3"	3-1/2"	4"	5"	6"
1/2"	1-1/2"	2"	2-1/2"	3"	3-1/2"	4"	5"	6"
5/8"	1-1/2"	2"	2-1/2"	3"	3-1/2"	4"	5"	6"

HEX MACHINE BOLTS



- * **SIZE AVAILABILITY:** 3/8" thru 1" diameter.
- * **FINISH:** Black, Galvanized.
 - The bolts are made from low carbon material, grade 2.
 - Galvanizing for 7/8" and 1" are a special order.
 - Larger sizes and longer lengths are available as a special order.

* **ORDERING:** Specify size, length, figure number, name and finish.

FIG. 165

DIA.	*STANDARD LENGTHS CARRIED IN STOCK								* STANDARD LENGTHS CARRIED IN STOCK							
	1"	1-1/4"	1-1/2"	2"	2-1/2"	3"	3-1/2"	4"	4-1/2"	5"	5-1/2"	6"	6-1/2"	-	-	-
3/8"	1"	1-1/4"	1-1/2"	2"	2-1/2"	3"	3-1/2"	4"	4-1/2"	5"	5-1/2"	6"	6-1/2"	-	-	-
1/2"	1"	1-1/4"	1-1/2"	2"	2-1/4"	2-1/2"	3"	3-1/2"	4"	4-1/2"	5"	5-1/2"	6"	7"	8"	9"
5/8"	1"	1-1/4"	1-1/2"	2"	2-1/4"	2-1/2"	3"	3-1/2"	4"	4-1/2"	5"	5-1/2"	6"	-	-	-
3/4"	1-1/2"	2"	2-1/2"	3"	3-1/2"	4"	4-1/2"	5"	5-1/2"	6"	-	-	-	-	-	-
7/8"	2"	2-1/2"	3"	3-1/2"	3-3/4"	4"	4-1/2"	5"	5-1/2"	6"	-	-	-	-	-	-
1"	2"	2-1/2"	3"	3-1/2"	3-3/4"	4"	4-1/2"	5"	5-1/2"	6"	-	-	-	-	-	-

HANGER ROD

CONTINUOUS THREADED STUDS



- * **SIZE AVAILABILITY:** 3/8" thru 3/4".
- * **FINISH:** Black, Galvanized.
 - The studs are made from 1008 - 1010 low carbon steel.
 - All studs pointed for easy threading.
 - Other lengths not listed are special order.

* **ORDERING:** Specify rod size, length, figure number, name and finish.

FIG. 166

STD. SIZE DIAMETERS	*STANDARD LENGTHS CARRIED IN STOCK				* STANDARD LENGTHS CARRIED IN STOCK			
	2"	3"	4"	5"	6"	8"	10"	12"
3/8"	2"	3"	4"	5"	6"	8"	10"	12"
1/2"	-	3"	4"	5"	6"	8"	10"	12"
5/8"	-	-	4"	5"	6"	8"	10"	12"